

NRL Newsletter

1st Edition

April 19, 2021



Marten Falls FN and Webequie FN Chiefs Message

Chief Bruce

“Marten Falls First Nation and Webequie First Nation are working on providing prosperity for our respective communities. As co-proponents, the NRL Project allows us to exercise our inherent right of self-determination and create business opportunities for our youth. Marten Falls First Nation will ensure the protection of the lands by having our First Nations lead the EA studies. We look forward to the partnership and the opportunities that will follow with economic development.”

Chief Cornelius

“Webequie First Nation is excited to partner on an Indigenous-led environmental assessment (EA) for the Northern Road Link Project. The reason why the two communities are co-leading the EA is to generate information which will allow for us to make an informed decision. As co-proponents, Marten Falls First Nation and Webequie First Nation will ensure environmental stewardship for our traditional territories. We are seeking to enhance the quality of life for our community members and looking forward to working towards our mutual aspirations.”

What is the Northern Road Link (NRL)?

The Northern Road Link is a proposed, approximately 120 km long all-season road that links the east end of the proposed Webequie Supply Road (WSR) with the north end of the proposed Marten Falls First Nation Community Access Road (MFCAR).

The NRL will link Webequie First Nation and Marten Falls First Nation to the McFaulds Lake area also known as the “Ring of Fire” and ultimately to the all-season highway network via the MFCAR.

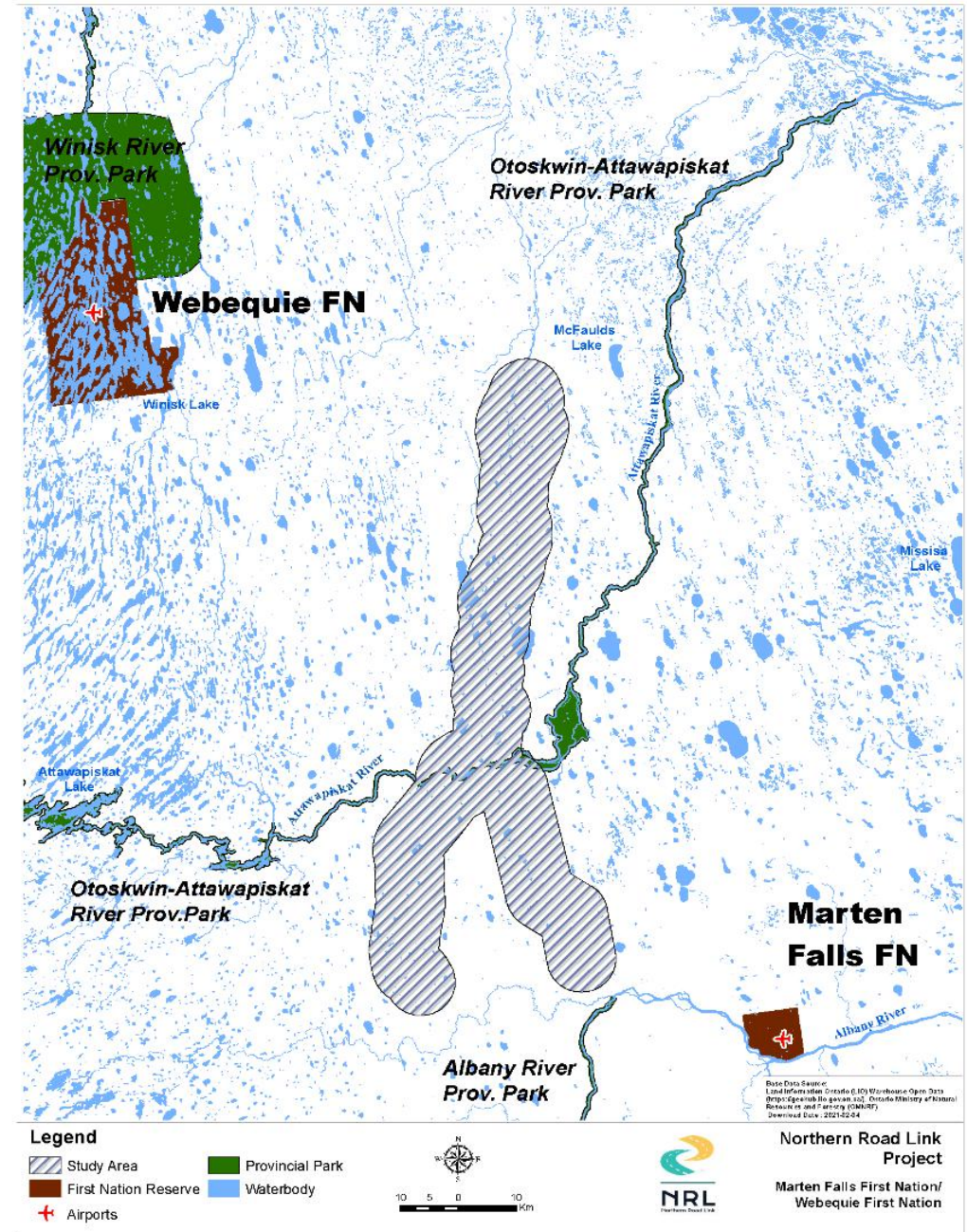
All three projects, WSR, MFFN CAR and NRL, are undergoing separate environmental assessments and will be engineered as all-weather, multi-use roads.

The NRL will provide a critical transportation link and significant economic opportunities for communities and community members in the region.



Where is the Proposed NRL?

NRL PROJECT PRELIMINARY STUDY AREA



The NRL Environmental Assessment Process

What is an Environmental Assessment (EA)?

In an environmental assessment, potential project effects are assessed and ways of controlling negative effects (**mitigation measures**) are identified. Data collected during an EA includes field survey data, Indigenous Knowledge and input from talking to community members and other interested groups (consultation).

Some examples of potential impacts and mitigation measures are:

- Flooding and / or blocking fish at culverts – changing or re-sizing culverts to make them more “fish friendly”
- Dust from construction/road operation – speed limits, dust control methods

Environmental Assessments also identify positive effects such increase training, employment, and businesses.

The Northern Road Link Project is **subject to both provincial and federal environmental assessments.**

The federal and provincial agencies will coordinate their EA processes as much as possible under:

- The Provincial *Environmental Assessment Act (EAA)*
- The federal *Impact Assessment Act (IAA)*

The Ontario Environmental Assessment Process

The Ontario EA process consists of two major phases:

Terms of Reference (ToR) –
“Planning” the EA



Environmental Assessment -
“Doing” the EA

Engagement & Consultation with
Indigenous communities throughout
the EA process.

The ToR will form the overall EA workplan and will be prepared in consultation with stakeholders.

The Federal Impact Assessment Process

The federal impact assessment process follows this path:

April – August
2021

Pre-Planning
[Prepare Initial
Project Description]

Start Sept 2021

Planning

**Impact
Statement**

**Impact
Assessment**

**Decision-
making**

**Post
Decision**

BY WFN/MFFN
(TIME AS
REQUIRED)

KEY PARTICIPANTS IN THE IMPACT ASSESSMENT SYSTEM





Community Engagement, Consultation & Participation

- Indigenous Knowledge (IK) will be included in **all** aspects of the environmental assessment
- Consultation with communities will occur virtually until COVID-19 restrictions are removed and communities can safely allow visitors to enter
- Our team will be providing tools to community members that will give them a clearer idea of some of the opportunities available on the project through its different stages of planning, construction and operation
- Webequie and Marten Falls community members interested in the project will be helped by our team to identify what jobs they might be interested in based on their skills and interests. Once they have been individually assessed, community members will be given a path forward that they can follow for training and skills development.

Contact Us

Michael Fox

Project Co-Lead

Indigenous Engagement and Consultation

690 Mountain Road, Suite 200

Fort William First Nation, ON P7J 1G8

807-472-6147

michael.fox@northernroadlink.com

Qasim Saddique

Project Co-Lead

Indigenous Engagement and Consultation

690 Mountain Road, Suite 200

Fort William First Nation, ON P7J 1G8

416-830-6544

qasim.saddique@northernroadlink.com

Angela Brooks

Project Manager

SNC-Lavalin Inc.

195 The West Mall

Toronto, ON M9C 5K1

Tel: 416-346-0111

angela.brooks@snclavalin.com

Project Schedule

APRIL 1, 2021 TO MARCH 31, 2022

- Consultation plan
- Draft and Final Environmental Assessment Terms of Reference (provincial EA process)
- Initial & Detailed Project Descriptions (federal EA process)
- Start of field studies & preliminary engineering
- Ongoing consultation

APRIL 1, 2022 TO MARCH 31, 2023

- Completion of field studies
- Draft Environmental Assessment Report/Impact Statement
- Preliminary design report
- Ongoing consultation

APRIL 1, 2023 TO MARCH 31, 2024

- Consult on comments
- Refine design and Environmental Assessment Report/Impact Statement, if required
- Ongoing Consultation