

NORTHERN ROAD LINK NEWSLETTER

Issue 9 | December 2022

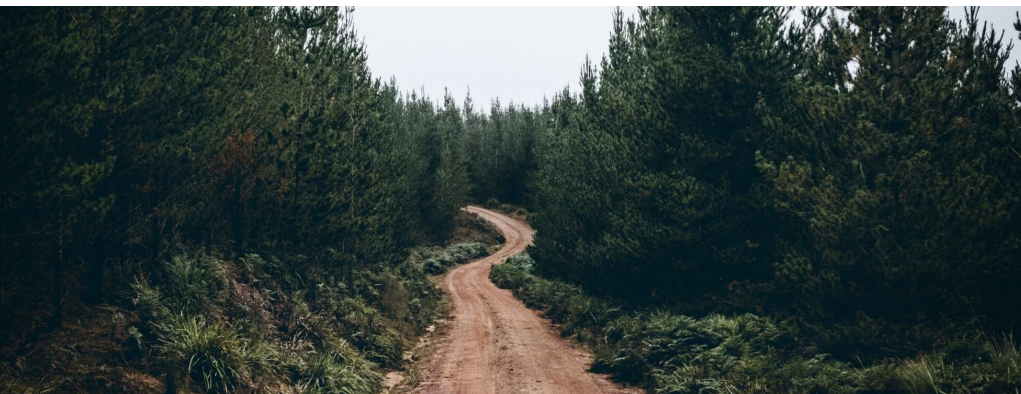
PROGRESS & UPDATES

Progress and updates since the last Northern Road Link (NRL) newsletter include:

- **April 29, 2022** - the proposed Terms of Reference (ToR) available for comment period
- **December 14, 2022** – close of additional time for Indigenous Communities to provide comments on the proposed ToR

UPCOMING ACTIVITIES

- Submission of Initial Project Description (IPD) to the Agency
- Planning/permitting for 2023 field surveys
- Ongoing meetings with Indigenous Communities
- Livestreams / radio shows
- Ongoing responses to the proposed ToR comments
- Planning for Aboriginal and Treaty Rights and Interests Forum
- Commencement of IK studies

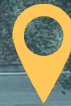
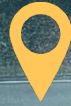
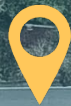
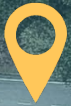


Fall/Winter 2022
Ongoing Engagement /
IK Program
Commencement

Winter 2023
Submission of IPD /
Commencement of
Provincial EA

Spring 2023
Submission of DPD

Summer 2023
Open Houses / Commencement
of Federal IA



WHAT WE'VE HEARD SO FAR

So far, the NRL Project Team has received many comments on the proposed ToR.

Four key comment themes and their related topics are listed below.

Consultation and Engagement / Indigenous Knowledge

- Alignment of consultation approach with community protocols
- Application of Marten Falls First Nation/Webequie First Nation guiding principles
- Potential job opportunities
- Concerns about meaningful consultation
- Incorporation of Indigenous Knowledge

Regional Considerations

- Waiting for completion of the Regional Assessment in the Ring of Fire before proceeding with the NRL EA/IA
- Project splitting
- Cumulative effects

Environmental Assessment Methods

- Approach to assessment of alternative methods
- Study areas / study plans
- Sensitive receptors locations
- Residual effects characterization

Valued Components

- Effects on Aboriginal and Treaty and Interests
- Effects on Cultural Continuity and Well-being
- Differential effects on different groups (e.g. violence against women and girls)
- Effects on Air Quality
- Effects on Climate Change
- Effects on Peatlands / Wetlands / Groundwater
- Concerns about crossing of the Attawapiskat River
- Effects on Species at Risk
- Socio-economic effects

PHOTO CONTEST LAUNCHING SOON

Send in photos of you using your land for a chance to win prizes. More details available soon at

www.northernroadlink.ca

Get your cameras ready!



CONTACT INFORMATION

www.northernroadlink.ca

1-888-515-3607

info@northernroadlink.com

